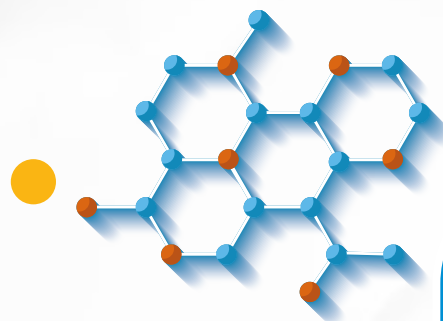


WHAT IS CORONAVIRUS DISEASE (COVID-19)?



COVID-19 is a new strain of coronavirus that was first identified in Wuhan, Hebei Province, China. The majority of cases have been reported in China, with a cluster of cases also reported in other countries.



According to the updated clinical and epidemiological features of the emerging virus, **COVID-19 is likely to have originated in animals, and the transmission from person to person has been reported.** People with **COVID-19** experience course of illness that generally range from mild to moderate symptoms. Severe symptoms and complications, or even death, may occur in people who suffer chronic diseases and lowered immunity.



For more info. on novel coronavirus (COVID-19) visit www.moph.gov.qa or call 16000